

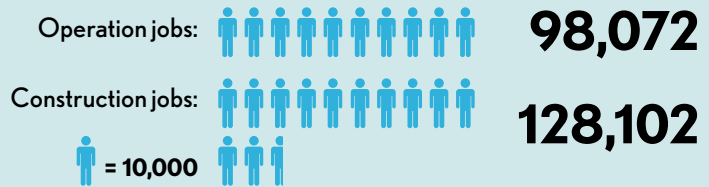
100% BANGLADESH

Transition to 100% wind, water, and solar (WWS) for all purposes
(electricity, transportation, heating/cooling, industry)

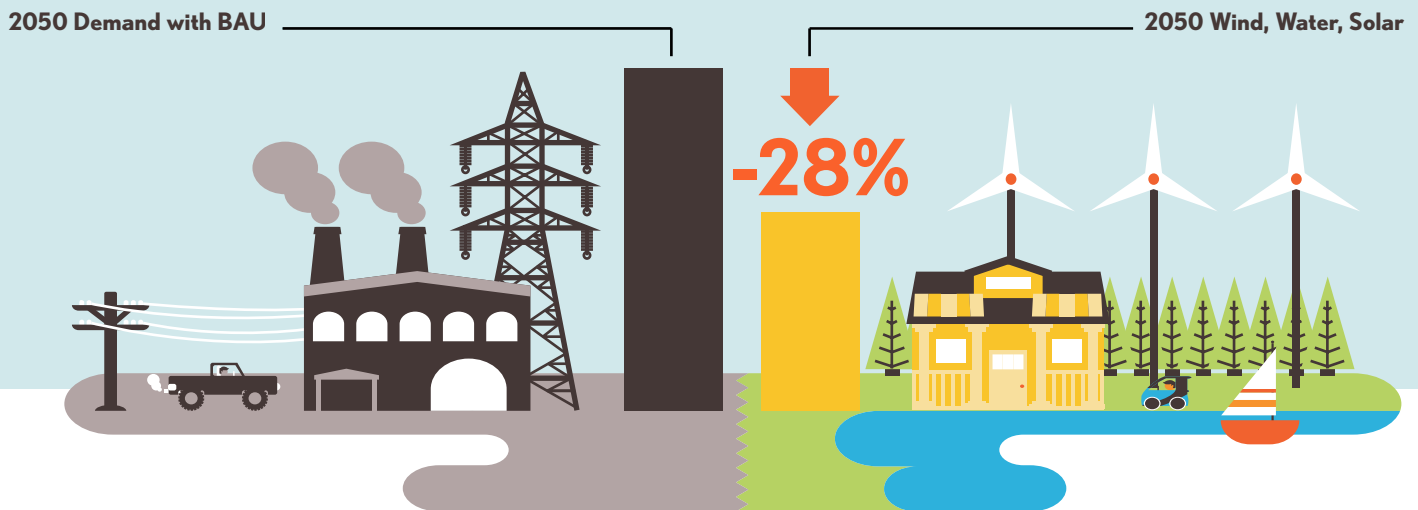


40-Year Jobs Created

Number of jobs where a person is employed for 40 consecutive years



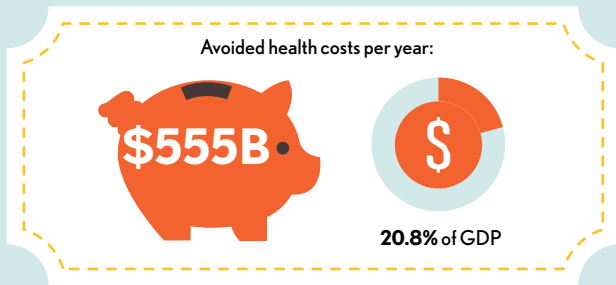
Using WWS electricity for everything, instead of burning fuel, and improving energy efficiency means you need much less energy.



100% BANGLADESH

Transition to 100% wind, water, and solar (WWS) for all purposes
(electricity, transportation, heating/cooling, industry)

Avoided Mortality and Illness Costs

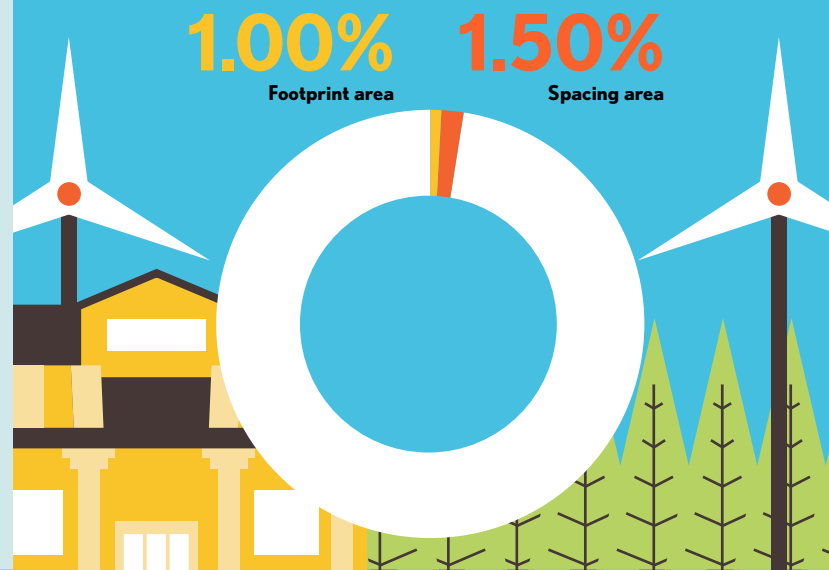


Air pollution deaths avoided every year: **123,340**



Plan pays for itself in as little as **0.6** years from air pollution and climate cost savings alone.

Percentage of Land Needed for All New WWS Generators



Future Energy Costs 2050

● BAU (Business as usual) ● WWS (Wind, water, solar)



Average fossil-fuel energy costs*

11.9 c/kWh

*Health and climate external costs of fossil fuels are another 5.7c/kWh



Average WWS electricity costs

6.9 c/kWh

Money in Your Pocket

☞ = \$200

Annual energy, health, and climate cost savings per person in 2050: **\$2,377**



Annual energy cost savings per person in 2050: **\$28**

